

“All Wrapped Up”

Designed by Amy Gibson of Stitchery Dickory Dock
Featuring the Holiday Magic collection by Whistler Studios
Finished Size: 55.5 x 66.5”



Check www.windhamfabrics.com Free Project section to see if there are any pattern updates before you start your quilt

WINDHAM FABRICS

812 Jersey Ave ~ Jersey City, NJ 07310 ~ 201.659.0444 ~ FAX: 201.659.9719
www.windhamfabrics.com email: retail@windhamfabrics.com

“All Wrapped Up”

Page 2

Yardage Requirements:



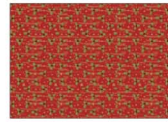
Background (white solid) 1 + 3/8 yds



Print 6 - 3/4 yd
#38970M-2 Red



Print 1 - 3/8 yd
#38971-4 Gold



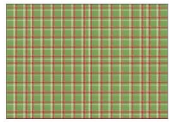
Print 7 - 3/8 yd
#38967M-2 Red



Print 2 - 5/8 yd
#38971-3 Green



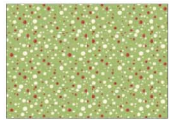
Print 8 - 3/8 yd
#38968-3 Green



Print 3 - 5/8 yd
#38969M-3 Green



Print 9 - 1/4 yd
#38969M-2 Red



Print 4 - 1/4 yd
#38970M-3 Green



Print 10 - 3/8 yd
#38968M-4 Gold



Print 11 - 5 1/4 yds
#38966M-X Multi

*All seams are right sides of fabric together with 1/4" allowances unless otherwise noted.

*WOF means the "width of fabric" selvedge to selvedge

Cutting:

For vertical sashing between blocks: From background fabric cut 2 strips WOF X 7.25", then subcut into 35 rectangles 1.25" X 7.25".

For horizontal "shelf" sashing between rows: Cut 3 strips WOF X 2.75" each from prints 2 and 10. Also, cut 2 strips each from print 8 and the background fabric.

For the inner border: Cut 6 strips WOF X 1.5" from print 3.

For the outer border: Cut 3 strips WOF X 3.5" from print 11.

Cut 6 strips LOF (length of fabric) 23" x 3.5" from Print 11 (do not include selvege).

For the binding: Cut 7 strips WOF X 2.5" from print 6.

“All Wrapped Up”

Page 3

Construction:

Print 15 copies each of both the A and B templates onto the paper of your choice- so 30 pages total. Take care that your printer settings are on “actual size” and not “shrink to fit,” so that your pieces will turn out the right size. To double check that the template printed correctly, measure the 1” marking on the template page with a ruler. If you're comfortable with foundation paper piecing, then jump right in using the layout diagram on page 4 as a reference for which prints to use in which blocks.

After you've cut out the templates outside the trim line, perforate along the lines by sewing over them with an unthreaded needle or rolling over them with a tracing wheel. Keep your A and B templates organized by using baggies, plates, or trays. You may also want to note which print you will use on each template by writing on the template.

For each block, paper piece all 3 sections, trim at the trim line (which includes seam allowance), then carefully tear off the paper. Stitch the 2 gift box sections together first, and then stitch the gift box to the bow section. Piece and press all 30 blocks (15 of A, 15 of B).

Following the layout diagram on page 4, stitch the blocks into 5 rows of 6 blocks each, alternating A blocks and B blocks, and inserting a 1.25" X 7.25" white sashing strip between each block, and at both ends of each row. Press seams toward the sashing.

To create the horizontal sashing, trim the selvages from each of the 2.75" sashing strips (you should have 10 of them). Join strips of the same print, end to end, to create 1 long strip of each print. Take the 2 longer strips (from prints 2 & 10), and cut them in half. You should now have 12 pieced strips. Following the layout diagram below, stitch the rows of blocks together, with the appropriate horizontal sashing strips above and below each row. Trim the excess strip fabric to the edges of the rows. Press toward the sashing.

To create and attach the borders, trim the selvages from the border strips, then join them each end to end to create 1 long strip for each of the 2 borders. Starting with the inner 1.5" border, stitch the strip to the sides on first, trimming even with the top and bottom of the quilt, then adding border to the top and bottom of the quilt, as shown in the layout diagram on page 4. Press toward the border,

For the outer border, seam the 3 WOF fabric pieces together and cut (2) top and bottom border pieces from this long strip. Sew to quilt. Seam 3 LOF pieces together for each of the sides (left and right) with tree direction going the same as on the top and bottom borders. Press toward the border.

“All Wrapped Up”

Page 4

FINISHING:

For the backing: Cut the remaining yardage of print 11 fabric in half, leaving 2 lengths approximately 76.5". Trim the selveges and stitch together 2 of the long edges to create the backing.

Quilt and bind as desired.

See following pages for templates.

**Always look on our website before starting your project to see
if there are any updates or corrections**

**Be sure to visit www.windhamfabrics.com to see the complete collection
and to download other Free Projects**

"All Wrapped Up"

Page 5

Layout Diagram

